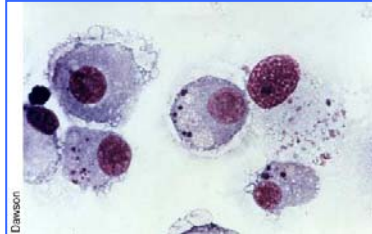




# 4<sup>th</sup> Annual Conference of the Dutch Society for Wildlife Health

National Institute for Public Health and the Environment (RIVM),  
Antonie van Leeuwenhoeklaan 9, Bilthoven, The Netherlands

Friday, May 19, 2006



Programme includes:

## Special topic: Arthropod-borne wildlife diseases

- **Keynote lecture: Emergence of West Nile virus in North America**  
Bob McLean, National Wildlife Research Center, WS/APHIS/USDA, Fort Collins, USA
- **Geographical risk analysis of lowland vectors for infectious diseases**  
Willem Takken, WUR, Wageningen, The Netherlands
- **Towards landscape design for reducing Lyme disease risk**  
Laura Jackson, US Environmental Protection Agency, Research Triangle Park, NC, USA
- **Monitoring of ticks and new findings on tick-borne diseases in the NL**  
Cor Gaasenbeek, ASG-WUR, Lelystad and Peter Wielinga, RIVM, Bilthoven, The Netherlands

## Other wildlife health issues

- **Avian influenza virus (H5N1) in Eurasia**  
Thijs Kuiken, Erasmus MC, Rotterdam, The Netherlands
- **Free communications (oral and poster presentations)**



### Registration fees

#### Early registration (up to 1 May 2006)

Students: free of charge

Members and post academic course participants: € 40,00

Non-members: € 80,00

#### Late registration (after 1 May 2006)

Students: free of charge

Post academic course participants: € 40,00

Members: € 70,00

Non-members: € 110,00

Fees include lunch, drinks (17.00-18.00h) and proceedings

### Abstracts (before 15 March 2006)

For submission of an oral presentation or poster, please contact:

Joke vd Giessen, National Institute for Public Health and the Environment (RIVM), the Netherlands

Email: Joke.van.der.Giessen@rivm.nl

### Student awards for the three best presentations.

#### Registration

For registration, please contact:

Secretary MGB, National Institute for Public Health and the Environment (RIVM), the Netherlands

Email: mgb-secretariaat@rivm.nl

**Satellite programme: Post academic course "Advances in Wildlife Health",**

on **Saturday, May 20, 2006** Location: **RIVM**. For more information: <http://www.dwhc.nl>



**Dutch Society for Wildlife Health (DSWH): <http://www.dutchwildlife.nl>**