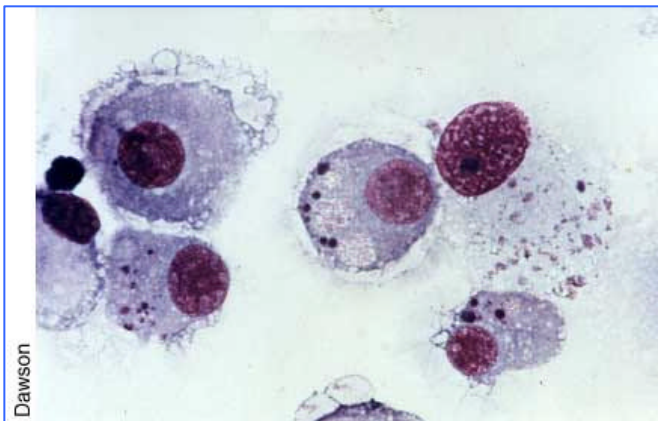


4th Annual Conference of the Dutch Society for Wildlife Health

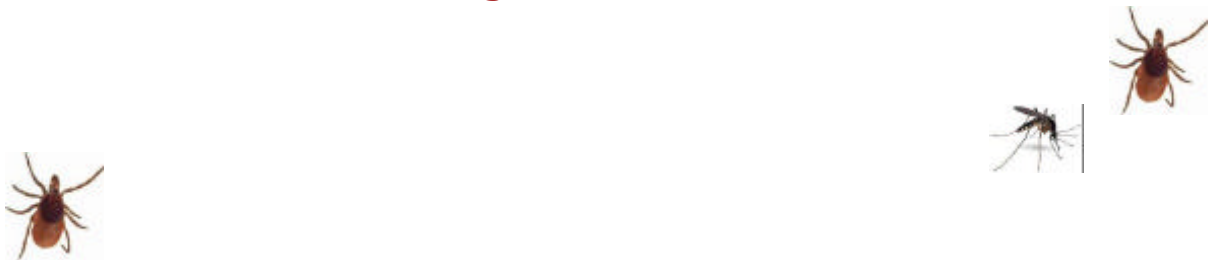


**National Institute for Public Health
and the Environment (RIVM),
Bilthoven, The Netherlands**

Friday, May 19, 2006



Programme



4th Annual Conference of the Dutch Society for Wildlife Health
National Institute for Public Health and the Environment, The Netherlands
Friday, May 19, 2006 Room: T0.07

Programme:

- 09.30-10.00: *Registration*
10.00-10.15: *Introduction* (Roel Coutinho, CIb, RIVM, Bilthoven, The Netherlands)

Special Session: Arthropod-borne wildlife diseases

Chaired by Joke van der Giessen (CIb, RIVM, Bilthoven, The Netherlands)

- 10.15-11.00: *Keynote lecture: Emergence of West Nile virus in North America* (Bob McLean, National Wildlife Research Center, WS/APHIS/USDA, Fort Collins, USA)
11.00-11.30: *Monitoring of ticks and new findings on tick-borne diseases in the Netherlands* (Cor Gaasenbeek, ASG-WUR, Lelystad & Peter Wielinga, CIb, RIVM, Bilthoven, The Netherlands)
11.30-12.00: *Coffee break*

Chaired by Emil Hovius (Veterinarian, Veldhoven, The Netherlands)

- 12.00-12.30: *Vectorial capacity and zoonotic implications of a resident population of *Dermacentor reticulatus* ticks in the Netherlands* (Frans Jongejan, Utrecht Centre for Tick-borne Diseases, Faculty of Veterinary Medicine, Utrecht University, Utrecht, The Netherlands)
12.30-13.00: *Geographical risk analysis of lowland vectors for infectious diseases* (Willem Takken, WUR, Wageningen, The Netherlands)
13.00-14.00: *Lunch and poster session*

Chaired by Emil Hovius (Veterinarian, Veldhoven, The Netherlands)

- 14.00-14.20: *The interaction of *Borrelia burgdorferi* and an *Ixodes* salivary protein facilitates infection of the vertebrate host.* (Joppe W.R. Hovius, Academical Medical Center, University of Amsterdam, Center for Experimental and Molecular Medicine, Amsterdam, The Netherlands)
14.20-14.40: *Lyme Disease in the Netherlands: doubling between 1994 and 2001 in general practices and doubling of hospital admissions between 2002 and 2004; an ecological analysis and update including 2005* (Agnetha Hofhuis, CIb, RIVM, Bilthoven, The Netherlands)

General Session: Other Wildlife Health Issues

Chaired by Herman Egberink (Faculty of Veterinary Medicine, Utrecht University, Utrecht, The Netherlands).

- 14.40-15.00: *The conflict between wildlife disease management and bioethics.* (Ad Vos, IDT GmbH, Germany)
15.00-15.20: **Echinococcus multilocularis*, an emerging parasite in the Netherlands* (Katsuhisa Takumi, CIb, RIVM, Bilthoven, The Netherlands)
15.20-15.40: *Limited evidence for endocrine disruption by TBBPA in estuarine flounder (*Platichthys flesus*) in an environmentally relevant experimental set-up* (Raoul Kuiper, Department of Pathology, Faculty of Veterinary Medicine, The Netherlands)
15.40-16.00 *Tea Break*
16.00-16.30: *Avian influenza virus (H5N1) in the eastern hemisphere* (Thijs Kuiken, Erasmus Medical Centre, Rotterdam, The Netherlands)
16.30-16.50: *Are free-ranging chickens and ducks related to the spread of avian influenza H5N1 outbreaks in Thailand?* (Thanawat Tiensin, Department of Livestock Development, Bangkok, Thailand and Faculty of Veterinary Medicine, Utrecht University, The Netherlands)
16.50-17.10: *Awards for the three best student presentations or posters, followed by closing remarks* (Joke van der Giessen, RIVM, Bilthoven, The Netherlands)
17.10-18.00: *Drinks*
18.00-19.00: *Business meeting Dutch Society for Wildlife Health*
19.30: *Dinner in eetcafe/restaurant "De Griffel", De Bilt (optional)*

Registration

Registration includes abstract book, lunch and drinks

Early registration (up to 1 May 2006)

Students: free of charge

Members and post academic course participants: € 40,00

Non-members: € 80,00



Late registration (after 1 May 2006)

Registration students: free of charge

Post academic course participants: € 40,00

Members: € 70,00

Non-members: € 110,00

Satellite programme: Post academic course "Advances in Wildlife Health",

Fees include lunch, drinks (17.00-18.00h) and proceedings on Saturday, May 20, 2006 Location: RIVM. For more information:

<http://www.dwhc.nl>

For registration of both meetings, please contact: secretary MGB Noel Peters (phone 030-2743022) Email: noel.peters@rivm.nl

Deadline for late registration: 15 May.

Note: Registration is needed before the meeting by email to noel.peters@rivm.nl

Due to safety regulations an identification card at RIVM reception is needed

Registration fee may be paid on the day of the meeting

Route RIVM: see pdf file

Dutch Society for Wildlife Health

(<http://www.dutchwildlife.nl>)

Mission statement:

The mission of the Dutch Society for Wildlife Health (DSWH) is to acquire, disseminate and apply knowledge of the health and welfare of wild and feral animals in relation to their biology, conservation and interaction with humans and domestic animals, with an emphasis on the Netherlands.

Objectives:

- To stimulate wildlife health related research and develop specific funding.
- To encourage an increased emphasis on wildlife health and welfare in the participating graduate school curricula and continuing education.
- To enhance the contribution of veterinary medicine to the health and welfare of wildlife.
- To encourage the concept of ecosystem health.
- To encourage a philosophy of management and preventive medicine as it relates to health and welfare of free-ranging animals.
- To stimulate wildlife health surveillance programmes and coordination of national veterinary activities in relation to wildlife.
- To stimulate national and international cooperation between both persons and organizations in the field of wildlife health.

Membership:

Membership of the Dutch Society for wildlife Health is open to anyone interested in accomplishing the above mission and objectives. To apply for membership, please contact J.T.Lumeij@vet.uu.nl, or look on the website: <http://www.dutchwildlife.nl>. Annual membership dues are 50 Euro (25 Euro for students).